



## Custom Metal Fabrication

Press Brake Bending - Shearing - Punching - Welding

www.jorgensonrolling.com



Custom fabricated channel and flat bar

### Bending and Welding

This is a custom device that is fabricated out of 1/2" steel flat bar that has been bent to specification and welded. Channel and square tube were also used to fabricate this device, both were cut to size before being welded. At Jorgenson Metal Rolling and Forming, we can help you produce functional devices and tools using our expertise in metal fabrication, including welding, shearing, punching and forming. Our rolling and forming department located in our facility also specializes in plate rolling, sheet metal rolling, angle rolling and rolling of many other structural shapes.



Bent plate welded and punched

### Plate Bending, Welding and Punching

These are custom supports fabricated from 1/4" steel plate and 1/4" flat bar. They are made out of bent plate and welded sections of flat bar that have been punched. The welded sections are also supported by gussets which are made from steel that has been cut to size and shape. Steel plate bending is done in our facility using our 500 ton 18 foot press brake. At Jorgenson Metal Rolling and Forming, we specialize in plate bending and plate rolling. We can also roll most structural shapes such as beam rolling, angle rolling, pipe and tube rolling, and channel rolling.



Galvanized Motorcycle stands

### Pipe Bending and Welding

These are motorcycle stands that are fabricated using pipe that is formed and welded. The base of these stands is made from steel plate that has been sheared to size, punched, and welded. The arm of the stand is made from pipe that has been bent to 90 degrees to form a half-square shape, and then welded. After being completed these stands were hot-dip galvanized to get the silver finish you see. At Jorgenson Metal Rolling and Forming, we use our diverse capabilities to allow us to be your one-stop shop for your custom metal fabrication, rolling and forming needs.



Rolled Cylinder Welded and Punched

### Plate Rolling and Welding

This cylinder was made with 1/4" rolled plate that has been welded. The base is made from cut plate that is punched all the way around and welded to the cylinder. The top of the cylinder is flared using 1/4" flat bar that has been rolled the hard-way using a special technique to form a complete ring that could be welded to the cylinder. Here at Jorgenson Metal Rolling and Forming, we specialize in all aspects of custom fabrication as well as metal rolling and forming. This part displays our expertise in metal rolling and forming used to produce detailed parts that meet your specifications.



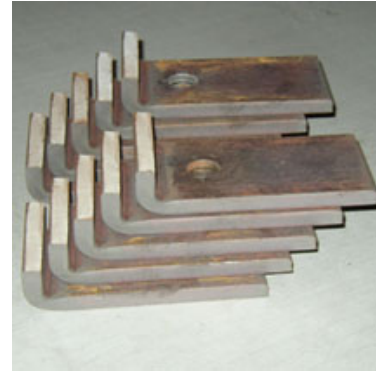
## Custom Metal Fabrication

Press Brake Bending - Shearing - Punching - Welding

www.jorgensonrolling.com



Aluminum Brackets Bent and Punched



Bent and Punched Steel Brackets

### Plate Bending and Punching

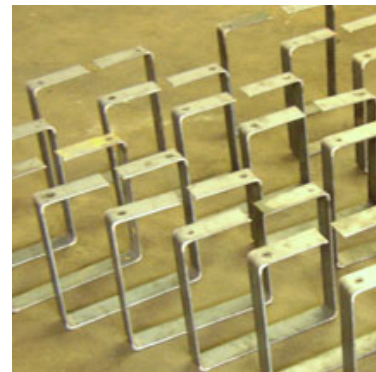
This is 3/8" aluminum flat bar that has been bent in three places and punched at each end to be used as a bracket. These brackets were bent using our 500 ton 18 foot press brake, which allows us to bend steel plate up to 1/2" thick by 10 feet long, and 3/8" thick plate up to 18 feet long. Bending and Forming is our specialty here at Jorgenson Metal Rolling and Forming. We also specialize in structural steel rolling using most shapes such as beam rolling, angle rolling, pipe rolling and tube rolling.

### Plate Bending

This is 3/4" thick plate that has been bent to 90 degrees. This plate was also sheared to size and punched. Plate shearing and punching are a part of our full service custom metal fabrication department, which is located in the facility. At Jorgenson Metal Rolling and Forming we can do heavy duty plate bending as well as rolling, our shop also has the ability to do plate rolling up to 1.0" thick and up to 10 feet in width.



Bent Steel Plates



Bent Flat Bar Press Brake

### Plate Bending

This is 5/8" thick plate that has been bent to 90 degrees at two points to form a saddle. This plate was also punched in our custom metal fabrication department, which is located in our facility. At Jorgenson Metal Rolling and Forming we can do heavy duty plate bending as well as rolling, our shop also has the ability to do plate rolling up to 1.0" thick and up to 10 feet in width.

### Flat Bar Bending and Punching

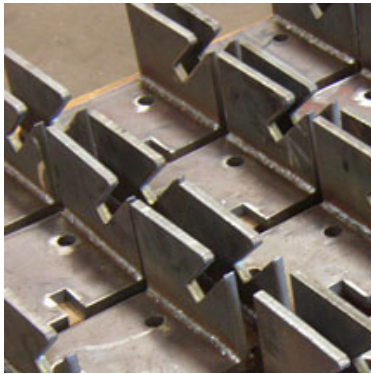
This is 1/4" x 1 1/2" flat bar that has been bent to 90 degrees to form a square. This flat bar was also sheared to size and punched. Shearing and punching are a part of our full service custom metal fabrication department, which is located in the facility. At Jorgenson Metal Rolling and Forming we can do heavy duty plate bending as well as rolling, our shop also has the ability to do plate rolling up to 1.0" thick and up to 10 feet in width.



# Custom Metal Fabrication

Press Brake Bending - Shearing - Punching - Welding

www.jorgensonrolling.com



Mig Welded Steel Brackets

### Punching and Welding

These parts are made from 3/8" plate that is welded to make to make a bracket and then punched. At Jorgenson Metal Rolling and Forming, located in Orange County, California, we can weld on many different materials, such as aluminum, carbon steel, and stainless steel. We have both a full service custom metal fabrication department located in our facility and a rolling and forming department. In the rolling and forming department we specialize in structural shape rolling such as angle rolling, beam rolling, channel rolling and also heavy-duty plate rolling.



Fabricated Pipe Columns Steel

### Punching and Welding

This part is 1/4" plate welded to make a saddle and then punched. The saddle is welded to a 2" round bar, which also has a 3/8" plate base welded on the other end. At Jorgenson Metal Rolling and Forming, located in Orange County, California, we have a full service custom metal fabrication department located in our facility that will take care of your shearing, punching and welding needs.



Stick Welded Steel Bracket

### Punching and Welding

This part is 3/8" plate welded to make to make a bracket and then punched. The bracket is welded at a 90 degree angle and is punched in multiple ways. At Jorgenson Metal Rolling and Forming, located in Santa Ana, California, we have both a full service custom metal fabrication department located in our facility and a rolling and forming department. In our rolling department we specialize in beam rolling, channel rolling, angle rolling, tube rolling, pipe rolling, as well as heavy-duty plate rolling and sheet metal rolling.



Mig Welding

### Welding

At Jorgenson Metal Rolling and Forming we can use many different welding processes, such as TIG welding, MIG welding, and stick welding. We can weld on aluminum, carbon steel and stainless steel. We have both a full service custom metal fabrication department located in our facility that will handle all of your welding, shearing and punching needs and a custom rolling and forming department. In our custom rolling department we specialize in plate rolling and sheet rolling as well as structural shape rolling, such as angle rolling, beam rolling, channel rolling, pipe rolling and tube rolling.



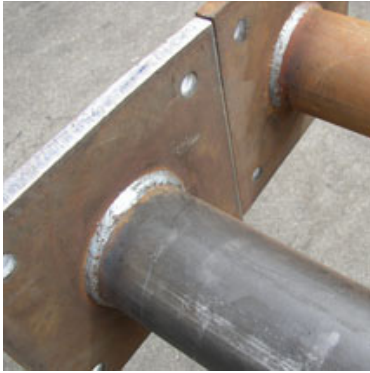
*Custom Rolling, Bending, Forming Steel - Since 1984*

**Toll Free: 877-754-0900**

## **Custom Metal Fabrication**

*Press Brake Bending - Shearing - Punching - Welding*

[www.jorgensonrolling.com](http://www.jorgensonrolling.com)



Welded Steel Base Plates

### **Punching and Welding**

This part is 3/8" plate welded to make a base and is punched. At Jorgenson Metal Rolling and Forming, located in Orange County, California, we can weld using the many different processes, such as TIG welding, MIG welding and stick welding. We have a full service custom metal fabrication department located in our facility that will take care of your shearing, punching and welding needs. Also in our facility we have a full service rolling and forming department where we can help you meet your plate rolling and other structural shape rolling needs.

---